



Little Blue Truck's Halloween



Activity Kit



littlebluetruckbooks.com



Little Blue Truck's Halloween

Written by Alice Schertle, Illustrated by Jill McElmurry



Decorating Ideas

Use the banner pages in this kit to make banners to hang around your event space.

Scatter real and plastic pumpkins around your party area. Make pumpkins with orange construction paper and tape them to walls and bookcases.

Be sure to have attendees come in costume for your Little Blue Truck Halloween party. Costumes should be cute and fun—a ballerina, a football player, a clown, a gentle witch—instead of creepy and scary.

Create glowing ghosts by drawing faces with a black marker on empty opaque gallon milk or water jugs. Cut a hole in the bottom of each jug and insert a battery-powered tea light candle to make your ghosts glow from within!

Print the mask page in this kit in quantity and cut out the image of Blue and his friends. Post the cutouts of Blue around your party area.

Stack a rectangular border of pillows in your event space and cover it with a blue sheet. Gather the children into the back of Little Blue Truck for story time!

Make a scarecrow by stuffing an old pair of blue jeans and a flannel shirt with hay. Tuck the shirt into the jeans and tie twine around the wrists and ankles to keep the stuffing inside. Draw a friendly face on a paper bag and fill that with straw to make your scarecrow's head. Top the head with a floppy hat. Put your scarecrow in a chair against a wall in your event space. Invite parents take pictures of their costumed kids by the scarecrow on your party day.





Little Blue Truck's Halloween

Written by Alice Schertle, Illustrated by Jill McElmurry



Circle Time Activities

Invite children to come dressed in Halloween costumes for your Little Blue Truck party. Have a Halloween parade once everyone is assembled. Before the party, prepare several of the masks from this kit so children who forget to come in costume can be Blue in the parade!

Play a Little Blue Truck version of Duck, Duck, Goose. Assemble the children in a circle on the floor. One child is Little Blue Truck and walks around the circle saying "Beep!" as he or she lightly taps each child's head in passing. To one child, Little Blue Truck says "Vrooom!" and runs around the circle while the "Vrooom" child chases Little Blue Truck back to the vacated space. The "Vrooom" child becomes Little Blue Truck for the next round.

Play guess the animal friend. Print a clip-art image of the following animals on individual slips of paper and put the slips in the cone of a witch's hat: Toad, Goose, Cow, Horse, Chicken, Pig, and Duck. Invite a child to come to the front and pick a paper from the hat. Instruct him or her to look at the animal, but not show the image to the rest of the kids. The child then mimics the noise that animal makes, and the rest of the children guess the animal. Choose a different child for the next animal, and so on...



Include an interactive reading of *Little Blue Truck* and *Little Blue Truck's Halloween* as part of your party. Before you read the books, teach the children a hand signal: every time you touch your ear, the children shout out "Beep!" Practice this a few times so the children get the hang of it and can say "Beep! Beep! Beep!" in succession with three ear taps in a row.

Read *Little Blue Truck* aloud first so the children will become familiar with the various characters in the series. As you read the story aloud, pause and touch your ear whenever the word "Beep!" appears in the text so the children participate in your reading of the story.

After reading *Little Blue Truck*, talk about the story with the children. How would they describe Blue? How does the dump truck behave when he first sees Blue? What happens to the dump truck when he goes through the mud? What does Blue do? How do Blue's friends help? How does the story end?.

Read *Little Blue Truck's Halloween* aloud, using your hand signal for the "Beep!" moments in the story. Invite the children to guess each animal character before you lift the flap on each spread.



Little Blue Truck's Halloween

Written by Alice Schertle, Illustrated by Jill McElmurry



Pumpkin Shapes

Blue and his friends love Halloween! It's always fun to make jack-o'-lanterns! Can you draw faces on the pumpkins below using the following shapes for eyes and noses?





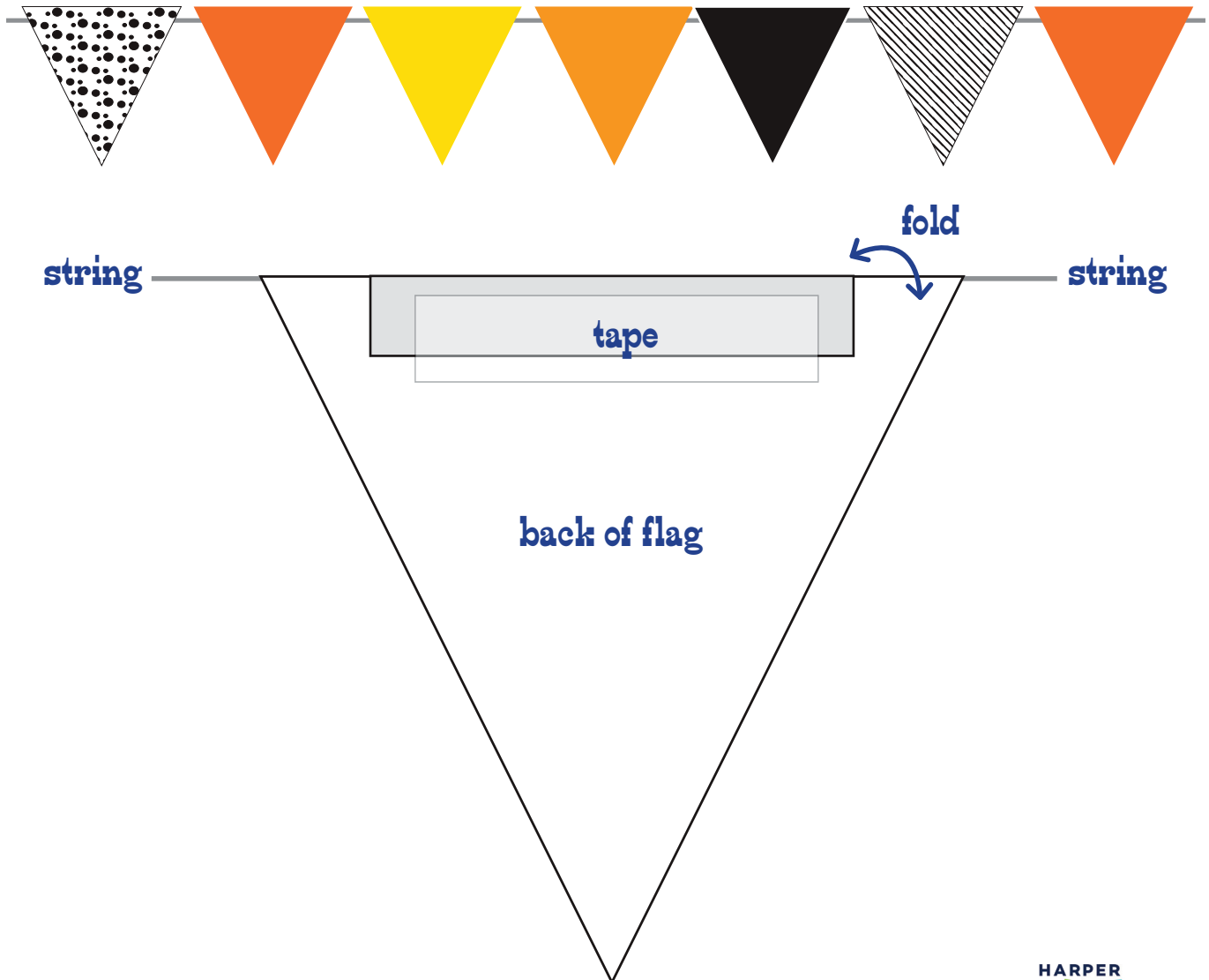
Little Blue Truck's Halloween

Written by Alice Schertle, Illustrated by Jill McElmurry



Bunting Flags

Print enough pages of flags to run the length of your banner. Cut out the flags. Lay flags out upside down, and in the order you want them to hang. Cut a piece of string long enough to hold all your flags. Lay the string across the back of the flags and fold the top flat edge back over the string. Use tape to secure. Hang your banner and you're ready to party!



Bunting Flags

Print enough pages of flags to run the length of your banner.

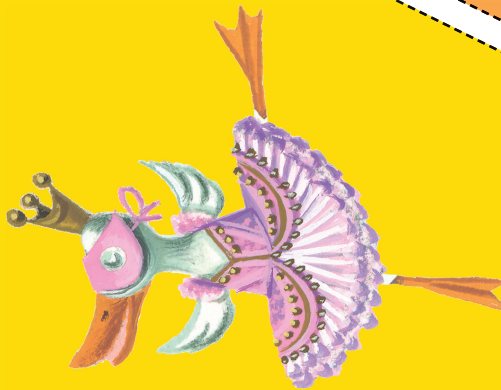
FOLD



FOLD



FOLD



littlebluetruckbooks.com

Art copyright © the Estate of Jill McElmurry. Permission to reproduce and distribute this page has been granted by HarperCollins Publishers. All rights reserved.

Bunting Flags

Print enough pages of flags to run the length of your banner.

FOLD



FOLD



FOLD



littlebluetruckbooks.com

Art copyright © the Estate of Jill McElmurry. Permission to reproduce and distribute this page has been granted by HarperCollins Publishers. All rights reserved.

Bunting Flags

Print enough pages of flags to run the length of your banner.

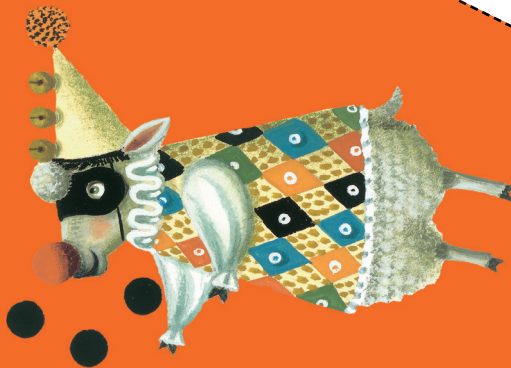
FOLD



FOLD



FOLD

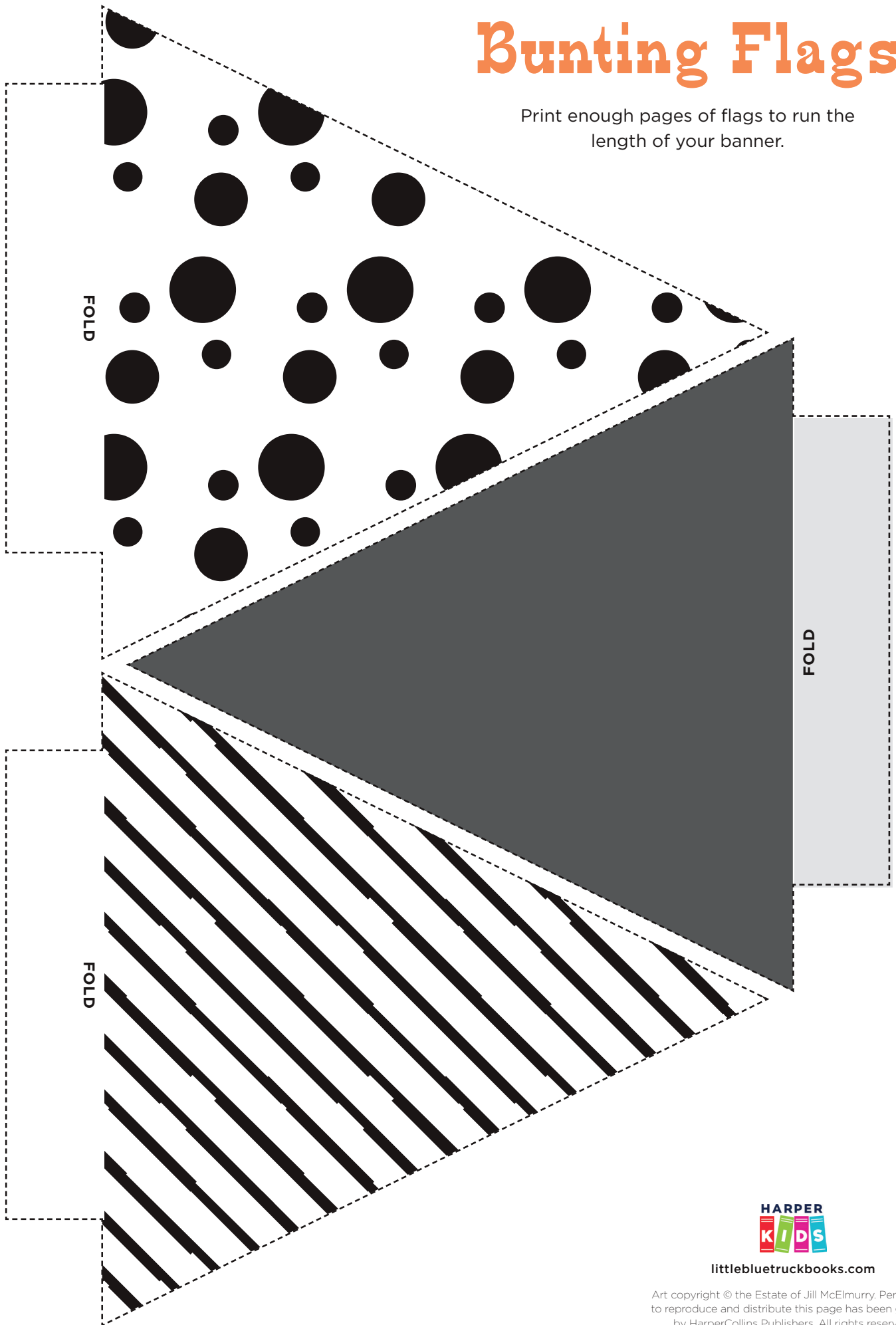


littlebluetruckbooks.com

Art copyright © the Estate of Jill McElmurry. Permission to reproduce and distribute this page has been granted by HarperCollins Publishers. All rights reserved.

Bunting Flags

Print enough pages of flags to run the length of your banner.



littlebluetruckbooks.com

Art copyright © the Estate of Jill McElmurry. Permission to reproduce and distribute this page has been granted by HarperCollins Publishers. All rights reserved.



Little Blue Truck's Halloween

Written by Alice Schertle, Illustrated by Jill McElmurry



Costume Matching

At Halloween, Blue and his friends dress up in costumes. Can you guess which animal is dressed up in each of the costumes below? Draw a line to match the costume to the friend.



COW



HORSE



TOAD

DUCK



SHEEP



Little Blue Truck's Halloween

Written by Alice Schertle, Illustrated by Jill McElmurry



Little Blue Truck Mask

When you dress up for Halloween, pretend you're Blue! Print this page on card stock. Cut out the mask and eye holes on the dotted lines. Add a craft-stick handle to the bottom and hold the mask in front of your face!

